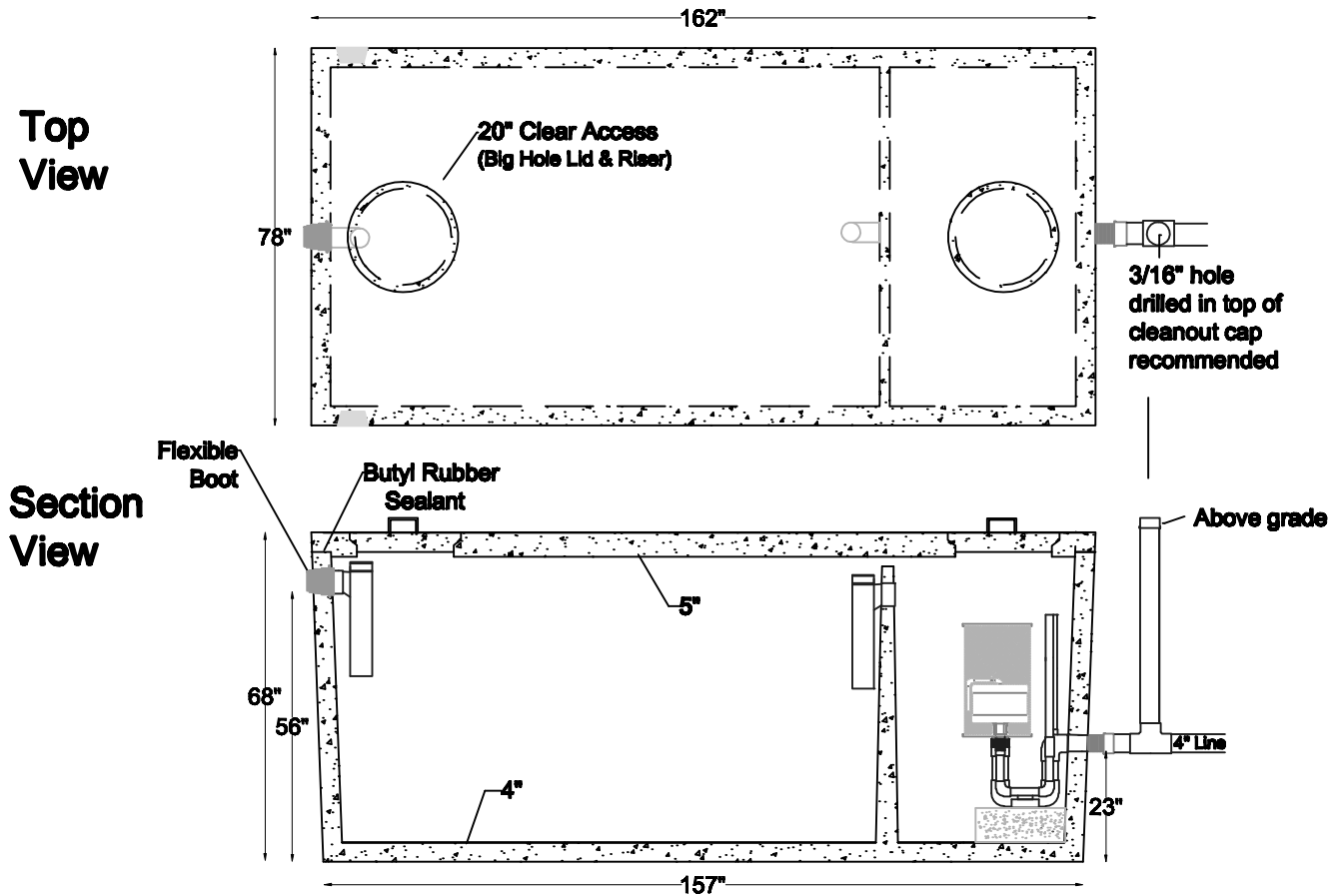


**Item #  
2000T-2CP-D3**

# 2000 Gallon Top Seam Two Compartment with 300 Series Dosing Siphon



- Tank:**  
 \*Meets ASTM C-1227 spec  
 Including C-1644-06 for resilient  
 connectors
- 4000 psi concrete
  - Delivered complete with internal piping

- Siphon:**
- All siphons have removable screens
  - Low maintenance
  - No moving parts
  - Completely non-corrosive

Digging Specs	Invert		Dimensions			Net Capacity		
	Inlet	Outlet	Length	Width	Height	Inlet Side	Outlet Side	Total
15' Long x 8' Wide 56" below inlet invert	56"	23"	162"	78"	68"	1,559 gallons	505 gallons	2,064 gallons

Net Weight		
Lid	Tank	Total
5,420 lbs	15,530 lbs	21,000 lbs



**Water &  
Wastewater**

- Systems
- Products
- Service

**(719) 395-6764**

**Fax: (719) 395-3727**

**Website: [www.valleyprecast.com](http://www.valleyprecast.com)**

**Email: [frontdesk@valleyprecast.com](mailto:frontdesk@valleyprecast.com)**

28005 Co. Rd. 317  
 P.O. Box 925  
 Buena Vista, CO 81211