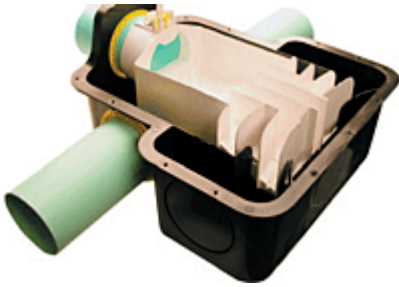


Item#  
TF173-0001

## Zoeller® Tru-Flow Splitter System



This innovative splitter system will evenly split effluent into two to five lines. It is made of two major parts:  
(1) The diverter basin & cover and the diverter.  
(2) The patented bubble level design allows for post construction adjustability and maintenance, thereby solving the problems associated with distribution box settlement.

The Tru-Flow unit may settle as much as 15° front to back (30° total) and/or 12° side-to-side (24° total) and, when adjusted, will evenly split effluent. The splitter system works with low flows as well as high flows. This unique design has no parts to wear out and utilizes corrosion resistant materials.



- Tested from 1/10 GPM to 30 GPM flows.
- Bubble level built on for easy adjustments and maintenance.
- Tru-Flow System is maintainable and adjustable from surface after installation.
- 4" Riser easily attached to visually inspect and adjust the diverter.
- Can be used as a recirculating valve.



Item#  
FS4

## Orenco® Flowsplitter Basins



Flowsplitter basins are used to split large variable flows, such as flows from a dosing siphon or effluent from a sand filter. Effective on systems with low available heads. Also used for level control in wetland systems. Comes with two outlets standard, but we can add more if necessary. **Vertical standpipes optional.**



Water &  
Wastewater

- Systems
- Products
- Service

(719) 395-6764

Fax: (719) 395-3727

Website: <http://valleyprecast.com/>

Email: [frontdesk@valleyprecast.com](mailto:frontdesk@valleyprecast.com)

28005 County Road 317  
P.O. Box 925  
Buena Vista, CO 81211