

Sewer & Storm Products

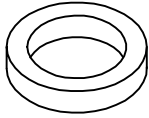


Flat Lid

OR

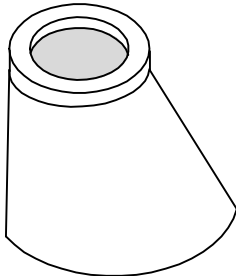


**Iron Ring & Cover
(Traffic Rating)**



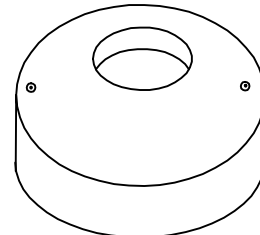
Grade Rings

- Different options and configurations available
- Steps, blockouts, and gaskets option available
- All manhole material is designed to ASTM C-478 specifications

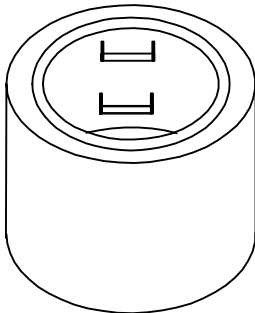


Eccentric Cone

OR

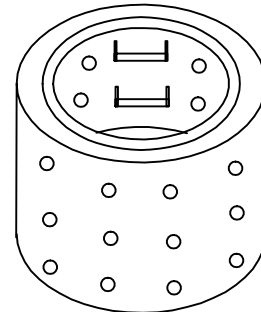


**Flat Top
(Traffic Rating)**

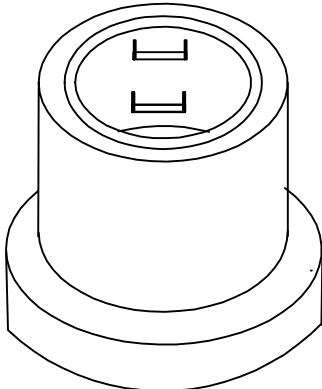


Riser Section

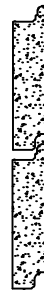
OR



Perforated Drywell Section



Base Section



Shiplap joints connect products



**Water &
Wastewater**

- Systems
- Products
- Service

(719) 395-6764

Fax: (719) 395-3727

Website: www.valleyprecast.com

Email: frontdesk@valleyprecast.com

28005 Co. Rd. 317

P.O. Box 925

Buena Vista, CO 81211